



CITCO

Centro de Inteligencia contra el
Terrorismo y el Crimen Organizado



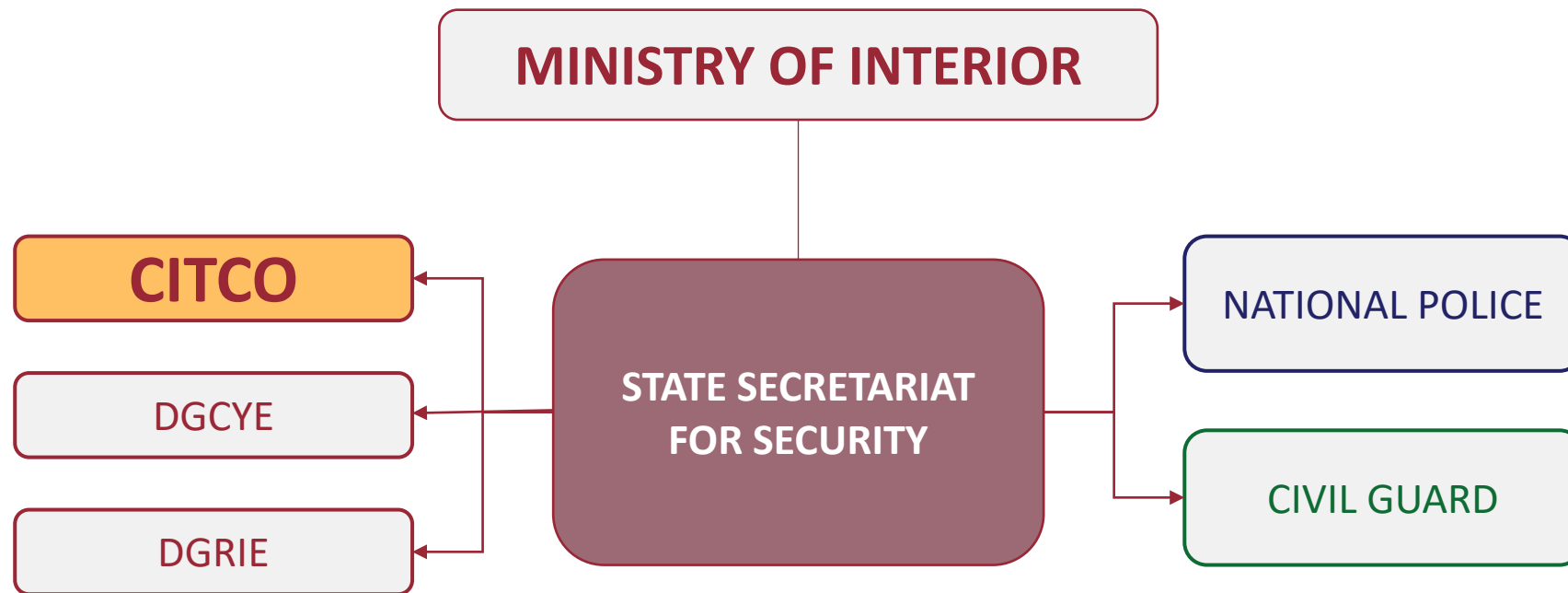
Response to Nuclear Security Incidents Involving Radioactive Sources: Spanish perspective

José García Sainz

10 June 2024



Law Enforcement Structure in Spain



CITCO

Centro de Inteligencia contra el
Terrorismo y el Crimen Organizado



GOBIERNO
DE ESPAÑA

MINISTERIO
DEL INTERIOR

About CITCO

- Fusion Center for OC & CT
- Dependence: Ministry of the Interior
- Staff: Members of Spanish LEAs
- Main Functions:
 - Elaboration of strategic intelligence
 - Developing strategies against Terrorism & OC
 - Coordinating investigations among LEAs

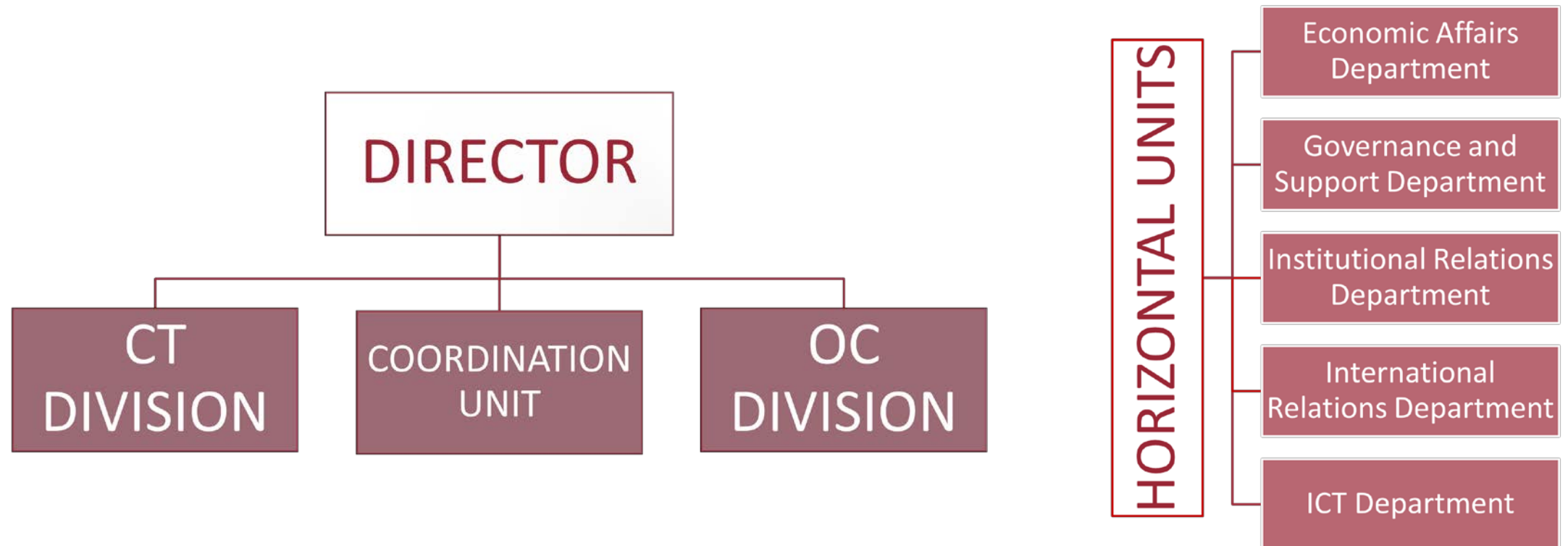


CITCO

Centro de Inteligencia contra el
Terrorismo y el Crimen Organizado



CITCO – Simplified Organizational Chart



Incident Response – the Actors



Nuclear Safety Council (CSN)



Ministry of Interior (Moi): law enforcement & Civil Protection



ENRESA

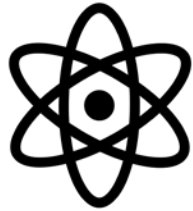


Ministry of Defence (MoD-UME)



Ministry of Justice (MoJ)

Incident Response – Responsibilities I



Nuclear Safety Council

Receives incident notification from licensees

Alerts law enforcement agencies via Mol

Provides scientific and technical support



Ministry of Interior

Investigates upon notification from CSN

Deploy MEST capabilities

Jurisdiction dependant

Coordinates with local authorities and other stakeholders



ENRESA

Recovers, transports and disposes of radioactive material



CITCO

Centro de Inteligencia contra el Terrorismo y el Crimen Organizado



Incident Response – Responsibilities II



Civil Protection

Provides support as needed
All emergency services
All jurisdictions



Ministry of Defence

Provides support as needed
MEST capabilities & more
Scalable deployment



Ministry of Justice

Orders LEAs to investigate upon
reception of public complaints
Learns from LEAs' investigation



CITCO

Centro de Inteligencia contra el
Terrorismo y el Crimen Organizado



Nuclear Safety Council (CSN)

- Receives incident alerts from licensees
- No specific national plan established for the recovery of missing radioactive sources
- CSN policy and protocols:
 - 1. Alerts law enforcement agencies (Moi) & ENRESA
 - 2. Provides scientific and technical support to command and control
 - 3. Communicates with the public:
 - - to raise awareness on the incident
 - - to inform of precautionary measures
 - - to prevent or minimize hazards to the public
- Ongoing project on geo-localization of radioactive sources: radioactive sources versus transport



CITCO

Centro de Inteligencia contra el
Terrorismo y el Crimen Organizado



Law Enforcement Agencies (MoI)

- National LEAs are competent within their respective jurisdictions throughout the Spanish territory
- Regional law enforcement agencies with CT & CBRNE capabilities: Basque Region & Catalonia
- Responsibilities and capabilities to operate independently:
 - To investigate criminal and terrorist activities within their respective jurisdictions
 - To deploy MEST (CBRNE)
- Supported by:
 - - CSN: technical and scientific support, including operational needs
 - - ENRESA: recovery, transport and storage of radioactive sources
 - - Civil Protection (MoI-DGPCyE): support mechanism at all jurisdictional levels
 - - UME (MoD): the military emergency unit may provide support depending on the scale and seriousness of the incident
- Lead authority: Ministry of Interior



CITCO

Centro de Inteligencia contra el
Terrorismo y el Crimen Organizado





Questions?

JGS@INTERIOR.ES



CITCO

Centro de Inteligencia contra el
Terrorismo y el Crimen Organizado





Thank you for your attention



CITCO

Centro de Inteligencia contra el
Terrorismo y el Crimen Organizado

